

OLYMPUS[®]

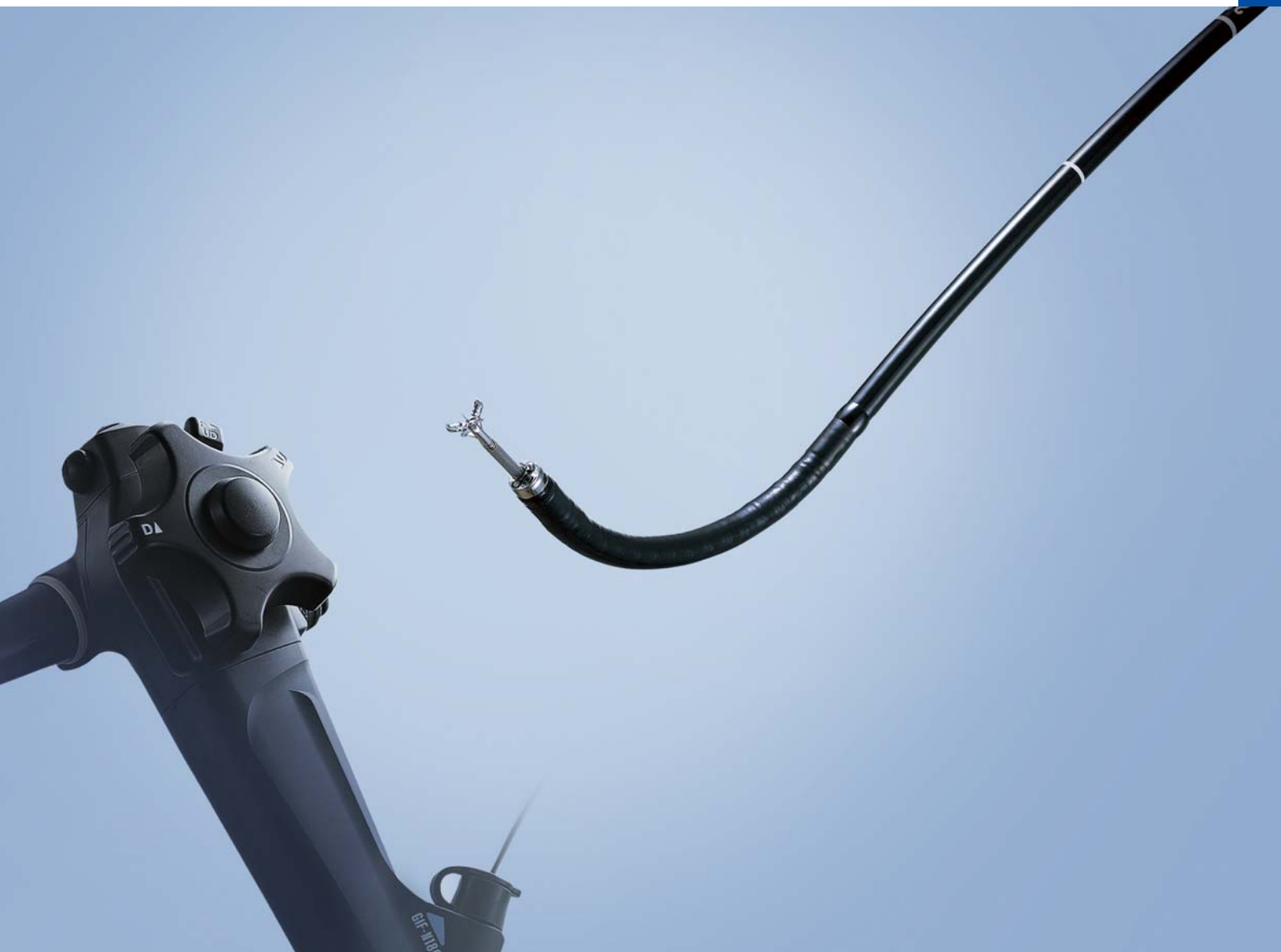
Your Vision, Our Future

EVIS EXERA II

EVIS EXERA II GASTROINTESTINAL VIDEOSCOPE

GIF-N180

A Marvel of Compact Design, the 4.9 mm Diameter Insertion Tube Improves Patient Comfort and Provides Outstanding Image Quality



Unparalleled performance in a super-slim design reduces patient discomfort and maximizes efficiency

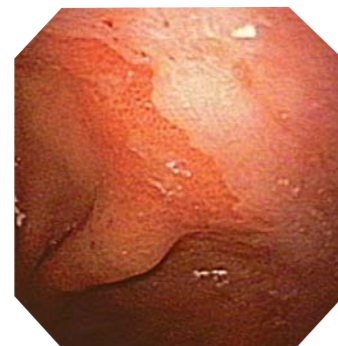
The world's first gastrointestinal videoscope to break the 5 mm barrier, the GIF-N180 is a marvel of compact design.

The entire insertion tube measures just 4.9 mm in diameter, resulting in improved insertion ability. Patient discomfort is reduced, and operator use enhanced. Above all, image performance is excellent.



■ High image quality and super-slim design

Despite its super-slim 4.9 mm diameter, the GIF-N180 delivers superb image quality, enhancing the mucosa and fine capillaries inside the upper gastrointestinal tract. This scope also features a 2.0 mm instrument channel, allowing a variety of treatment options.



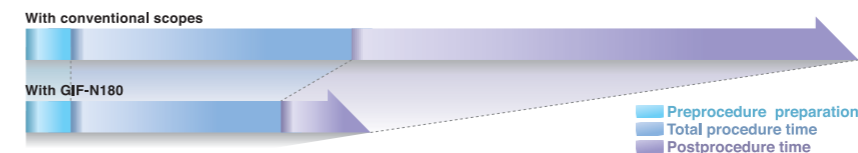
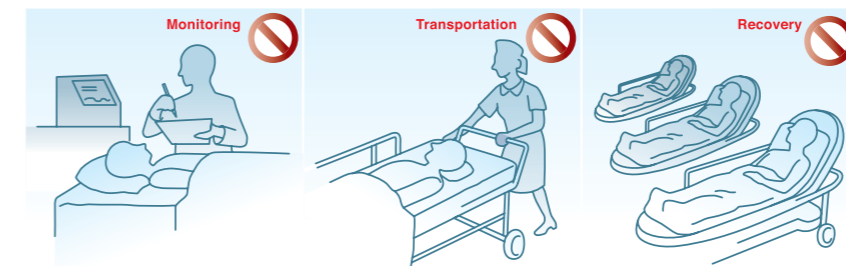
■ Insertion possible with minimal or even no sedation

The super-slim design of the GIF-N180 is expected to make it possible to perform routine examinations with little or no sedation, without causing significant discomfort for patients.

■ Purpose-designed insertion tube characteristics for transnasal endoscopy



■ Streamlined workflow shortens examination time



Reduction in patient recovery time will contribute to improvements in daily procedural efficiency.

The working length of the GIF-N180 has been designed with an appropriate degree of stiffness to prevent looping and ensures that the scope can reach the duodenal bulb when inserted transnasally.

Main Features

- Super-slim 4.9 mm diameter along the entire insertion tube offers outstanding insertion capability that should enhance patient comfort.
- Excellent image quality with outstanding clarity and sharpness.
- NBI function is available in combination with the CV-180 and CLV-180.
- Air/Water nozzle at the distal end keeps a clear field of view.
- A 2.0 mm diameter instrument channel enables the use of a number of endotherapy accessories.
- 1100 mm working length has appropriate stiffness to ensure excellent insertion capability and maneuverability.
- Two-way angulation (210° up and 120° down) for efficient examination of the upper gastrointestinal tract.
- 120° field of view enables accurate observation of a wide area.
- Ergonomically designed grip enhances scope maneuverability while easy-to-access controls and user programmable switches improve operability.
- Fully compatible with CV-180/160/140.


- Scope ID function stores individual scope information in the built-in memory chip and displays it on the monitor, facilitating endoscopy suite management.

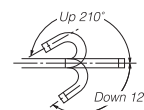
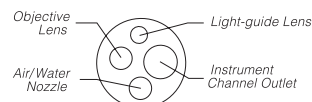


Start-up display



Specifications

Optical System	Field of view	120°
	Direction of view	Forward viewing
	Depth of field	3 to 100 mm
Distal End	Outer diameter	4.9 mm
Insertion Tube	Outer diameter	4.9 mm
Bending Section	Angulation range	Up 210°, Down 120°
Working Length		1100 mm
Total Length		1420 mm
Instrument Channel	Inner diameter	2 mm
	Minimum visible distance	2 mm from the distal end
	Endotherapy accessory entrance/exit position in field of view	
High-Frequency Compatibility		NO



Specifications, design and accessories are subject to change without any notice or obligation on the part of the manufacturer.